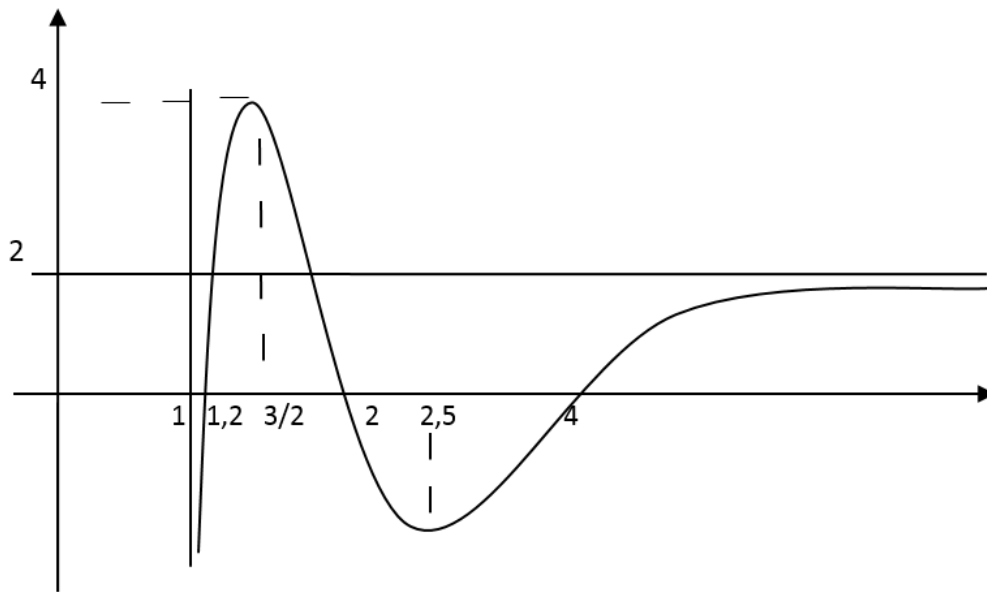


## Concepto de límite

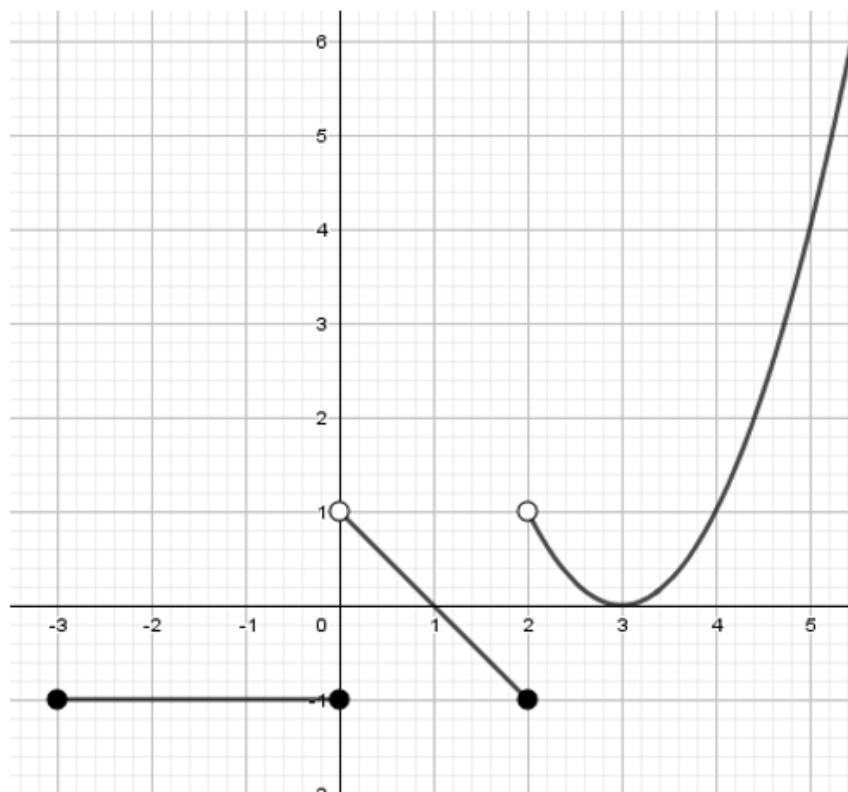
Observando el gráfico de las siguientes funciones  $f$ , indicar los resultados de los límites que se piden.

1.



- $\lim_{x \rightarrow 4^\pm} f(x) =$
- $\lim_{x \rightarrow 2^\pm} f(x) =$
- $\lim_{x \rightarrow 3/2^\pm} f(x) =$
- $\lim_{x \rightarrow 1,2^\pm} f(x) =$
- $\lim_{x \rightarrow 1^\pm} f(x) =$
- $\lim_{x \rightarrow 0^\pm} f(x) =$
- $\lim_{x \rightarrow +\infty} f(x) =$
- $\lim_{x \rightarrow -\infty} f(x) =$

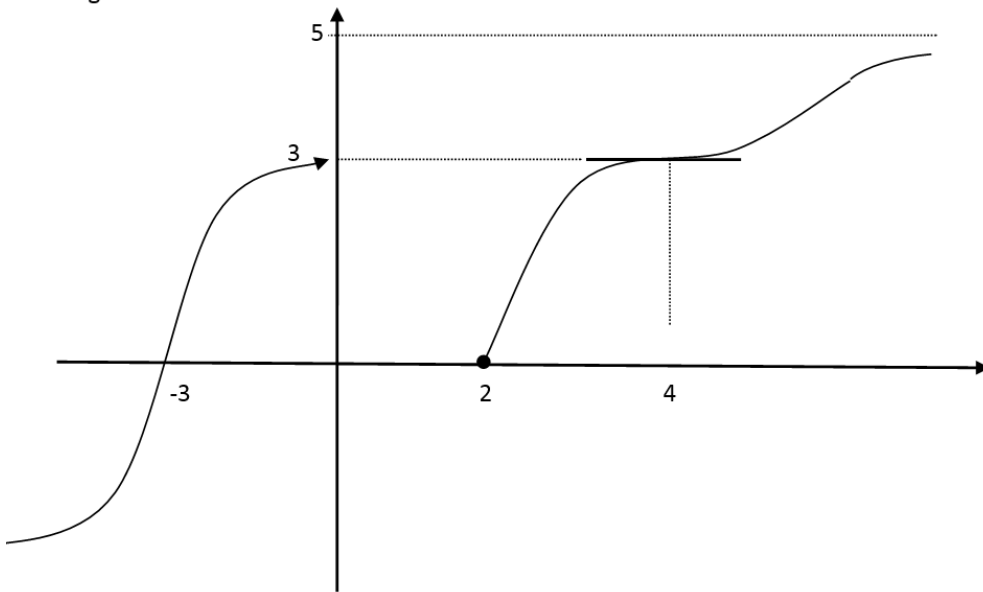
2.



- $\lim_{x \rightarrow 4^\pm} f(x) =$
- $\lim_{x \rightarrow 3^\pm} f(x) =$
- $\lim_{x \rightarrow 2^\pm} f(x) =$
- $\lim_{x \rightarrow 1^\pm} f(x) =$
- $\lim_{x \rightarrow 0^\pm} f(x) =$
- $\lim_{x \rightarrow -2^\pm} f(x) =$
- $\lim_{x \rightarrow -3^\pm} f(x) =$
- $\lim_{x \rightarrow +\infty} f(x) =$
- $\lim_{x \rightarrow -\infty} f(x) =$

3.

Sea el gráfico de f:



●  $\lim_{x \rightarrow 4^\pm} f(x) =$

●  $\lim_{x \rightarrow 2^\pm} f(x) =$

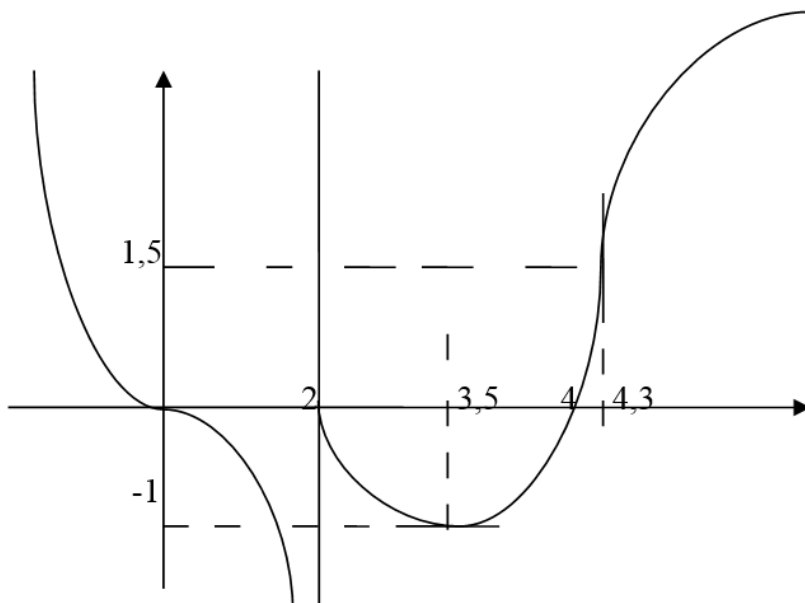
●  $\lim_{x \rightarrow 0^\pm} f(x) =$

●  $\lim_{x \rightarrow 3^\pm} f(x) =$

●  $\lim_{x \rightarrow +\infty} f(x) =$

●  $\lim_{x \rightarrow -\infty} f(x) =$

4.



●  $\lim_{x \rightarrow 4,3^\pm} f(x) =$

●  $\lim_{x \rightarrow 4^\pm} f(x) =$

●  $\lim_{x \rightarrow 3,5^\pm} f(x) =$

●  $\lim_{x \rightarrow 2^\pm} f(x) =$

●  $\lim_{x \rightarrow 0^\pm} f(x) =$

●  $\lim_{x \rightarrow +\infty} f(x) =$

●  $\lim_{x \rightarrow -\infty} f(x) =$