

Clase por Discord- 21 de abril

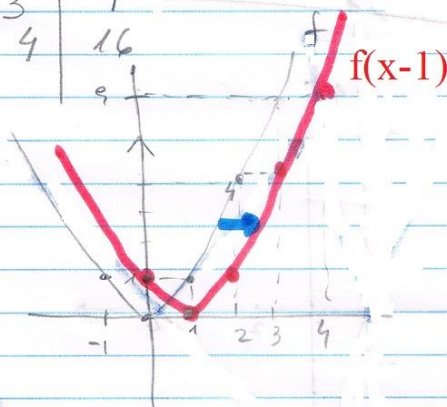
f(x-c)

$$f(x) = x^2$$

$$f(x-1) = (x-1)^2$$

x	f(x)
0	0
1	1
2	4
3	9
4	16

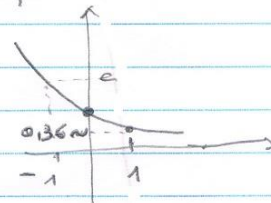
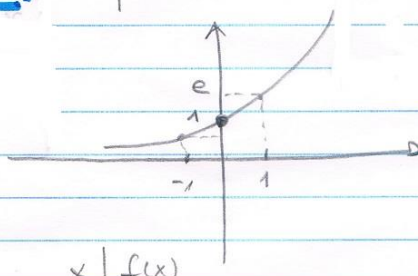
x	f(x-1)
0	1
1	0
2	1
3	4
4	9



f(-x)

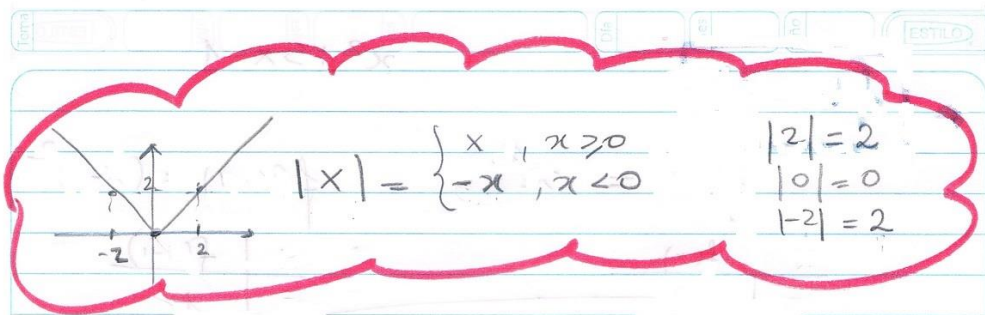
$$f(x) = e^x$$

$$f(-x) = e^{-x}$$



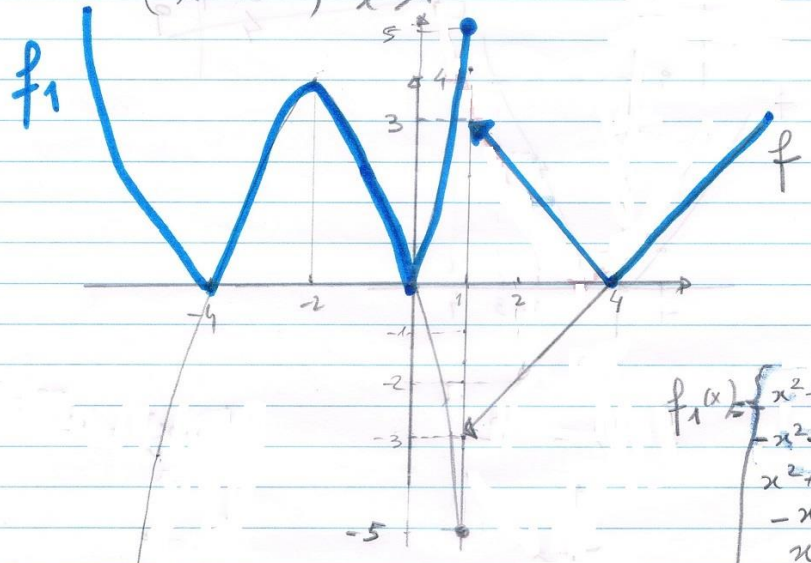
x	f(x)
0	1
1	$e \approx 2,7$
-1	$e^{-1} \approx 0,36$

x	f(-x)
0	1
1	$e^{-1} \approx 0,36$
-1	$e^1 \approx 2,71$



$f(x) = \begin{cases} -x^2 - 4x, & x \leq 1 \\ x - 4, & x > 1 \end{cases}$

$f_1(x) = |f(x)|$



$f_1(x) = \begin{cases} x^2 + 4x, & x \leq -4 \\ -x^2 - 4x, & -4 < x \leq 0 \\ x^2 + 4x, & 0 < x \leq 1 \\ -x + 4, & 1 < x < 4 \\ x - 4, & x \geq 4 \end{cases}$