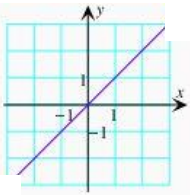
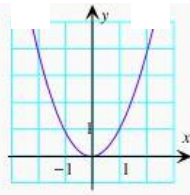


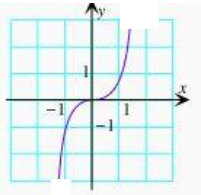
Gráficos de algunas funciones básicas:



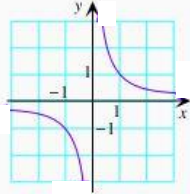
$$f(x) = x$$



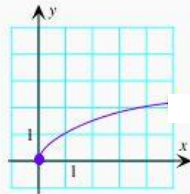
$$f(x) = x^2$$



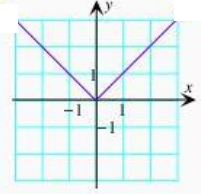
$$f(x) = x^3$$



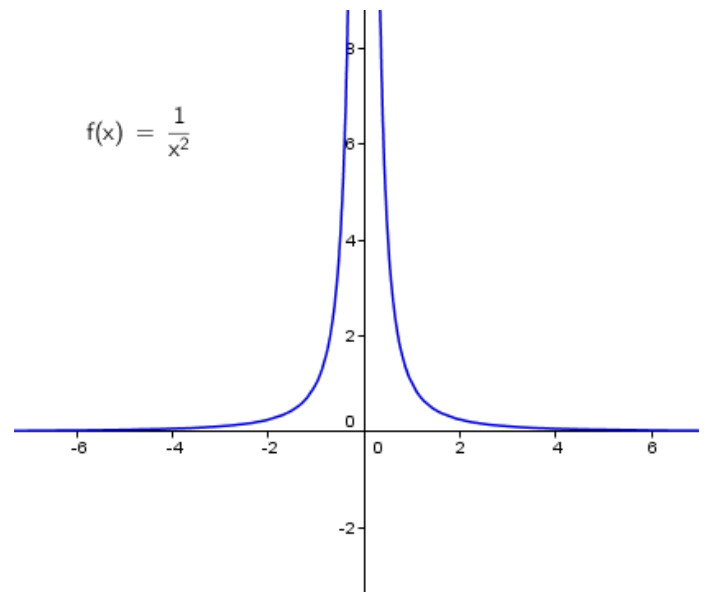
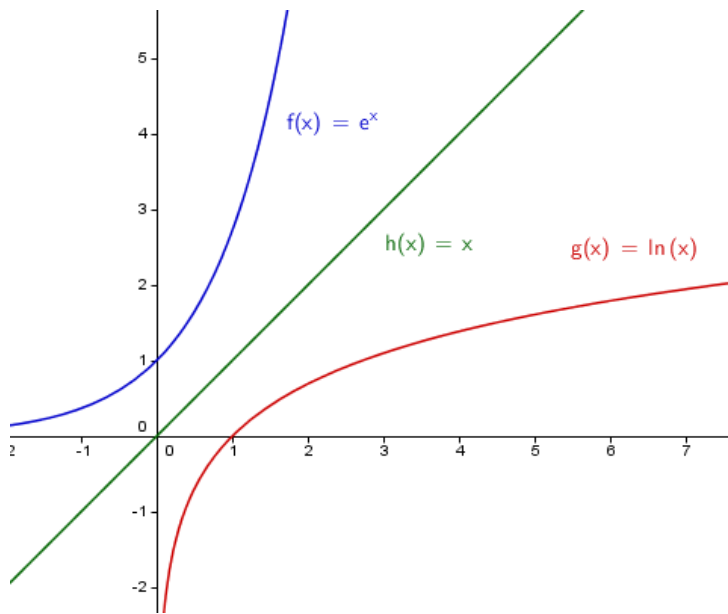
$$f(x) = \frac{1}{x}$$



$$f(x) = x^{1/2}$$

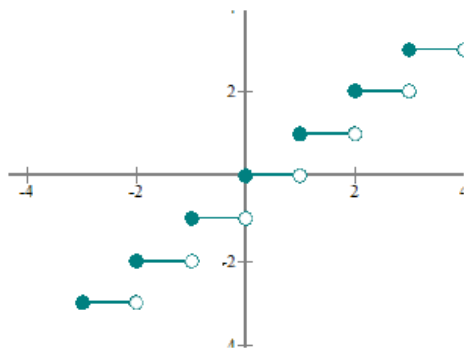


$$f(x) = |x|$$



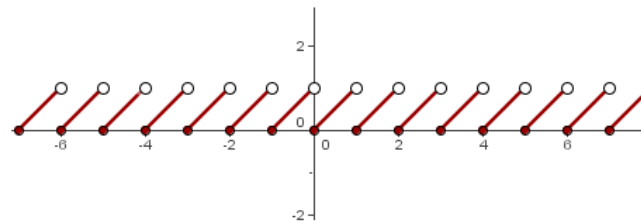
Función parte entera de x

$$f(x) = E(x)$$



Función mantisa

$$f(x) = x - E(x)$$



Función signo

$$f(x) = \text{sgn}(x)$$

$$f(x) = \begin{cases} -1 & \text{si } x < 0 \\ 0 & \text{si } x = 0 \\ 1 & \text{si } x > 0 \end{cases}$$

